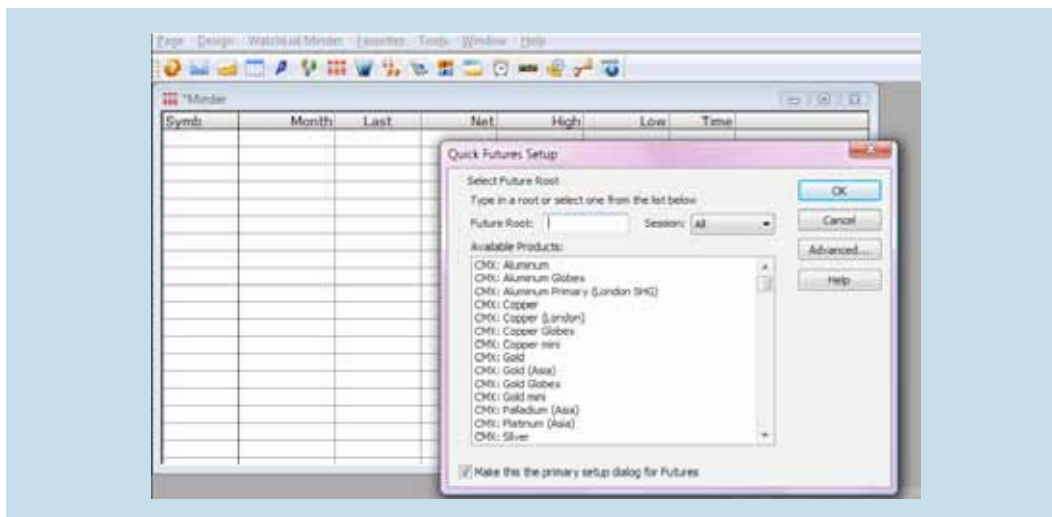


## How to view Exchange Data

For subscribers who need to view live Exchange information the **MarketMinder** function is used to bring this information to the desktop. Common exchanges available are NYMEX, ICE, COMEX, LME, and CBOT. The module contains easy setup and customized information views. Please refer to the London Metal Exchange (LME) instruction sheet for LME setup.

The easiest way to create a window for your desktop uses a predefined set of contract root symbols for selection. This contract list is not meant to be a complete list of all exchange contracts but does list the most common selections of POTN users.

To set up, click on **Design > MarketMinder** to bring up the selection screen below.



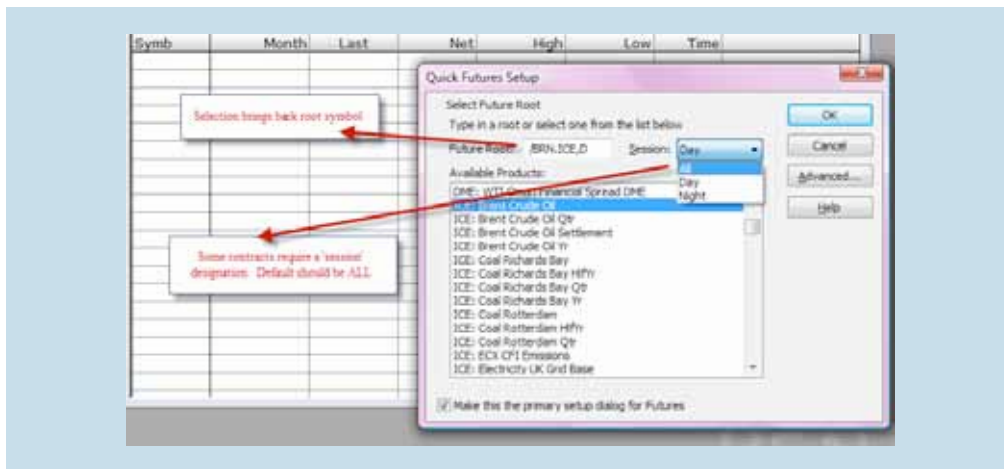
Select the contract. This brings the root into the Futures Root box. Not all contracts require a session. **ALL** should bring back all information. This can easily be changed if you need to filter further.

Sessions for NYMEX and Comex:

**Day** = Floor Trades

**Night** = Electronic Trade

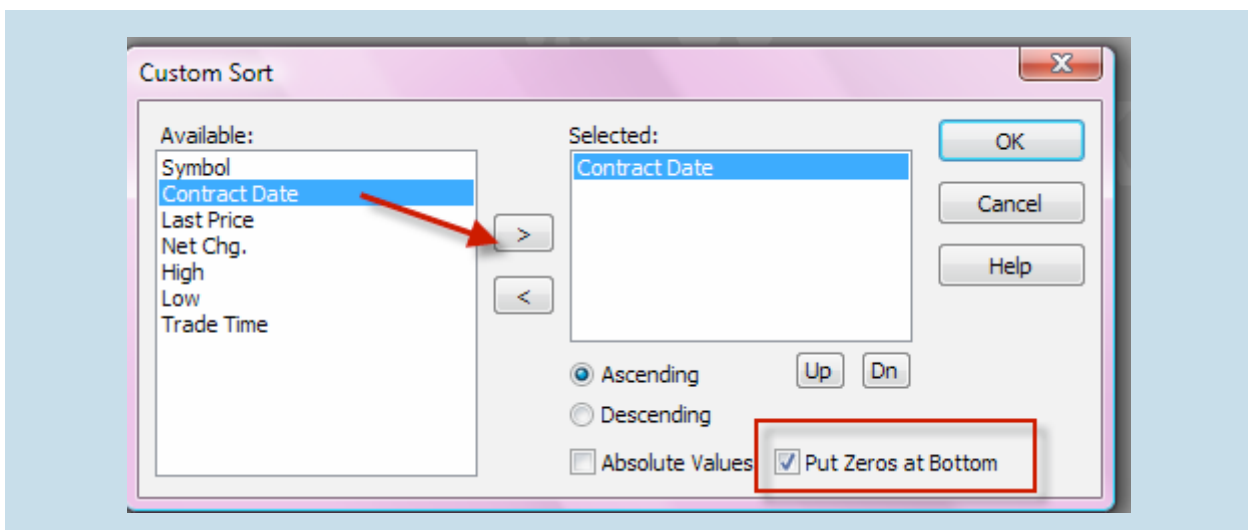
**All** = will bring back both sessions into one screen.



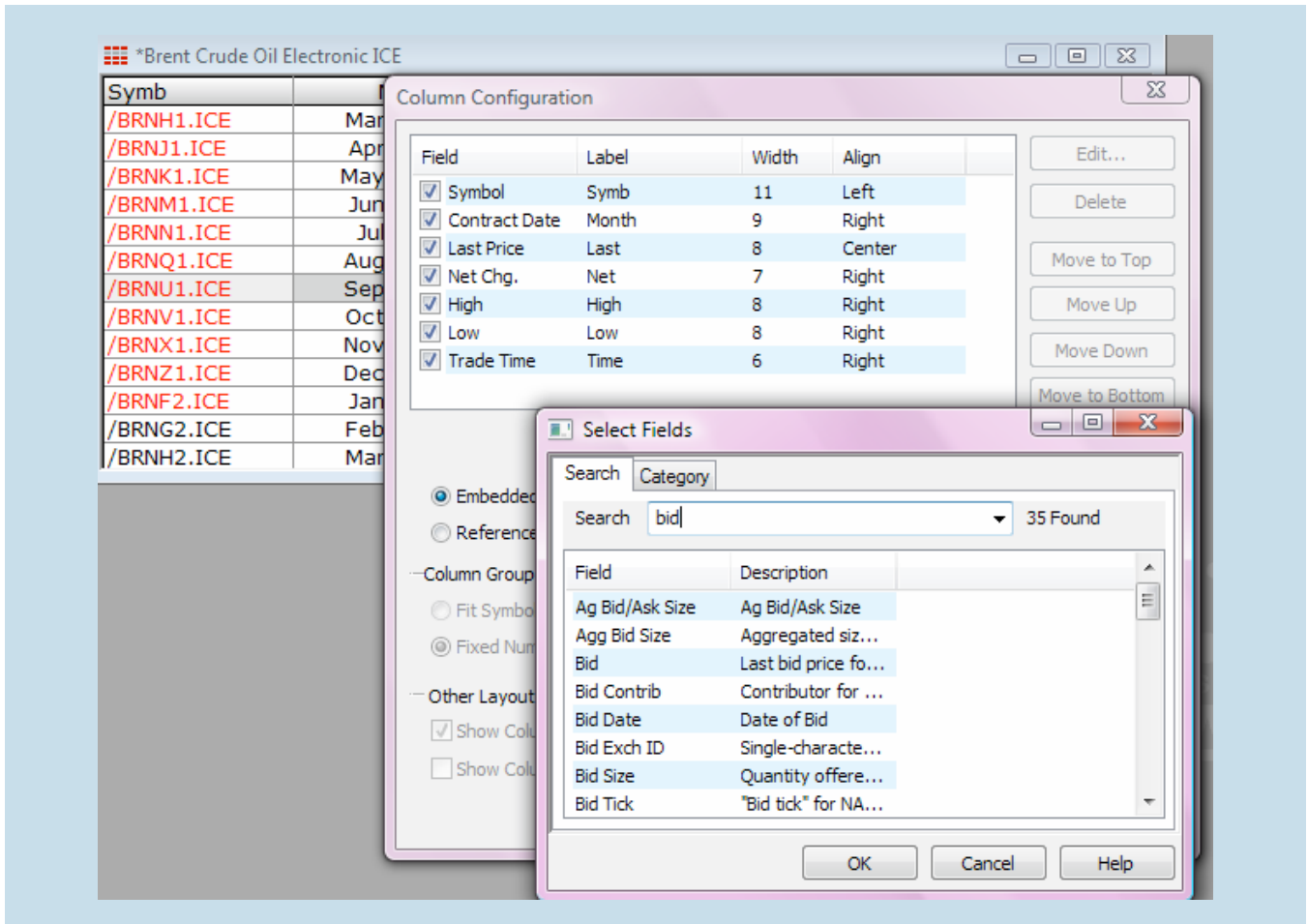
Below is the default column setup that will populate with data.

Symb	Month	Last	Net	High	Low	Time
/BRNH1.ICE	Mar 2011	99.83 S	-1.66	102.48	99.48	23:49
/BRNJ1.ICE	Apr 2011	100.25 S	-1.64	102.82	99.90	23:34
/BRNK1.ICE	May 2011	100.63 S	-1.76	103.10	100.23	22:10
/BRNM1.ICE	Jun 2011	100.94 S	-1.72	103.31	100.48	22:10
/BRNN1.ICE	Jul 2011	101.15 S	-1.71	103.43	100.68	22:00
/BRNQ1.ICE	Aug 2011	101.28 S	-1.72	103.54	100.81	22:00
/BRNU1.ICE	Sep 2011	101.37 S	-1.84	103.59	100.91	20:42
/BRNV1.ICE	Oct 2011	101.49 S	-1.67	103.68	101.02	22:00
/BRNX1.ICE	Nov 2011	101.57 S	-1.63	103.74	101.10	22:00
/BRNZ1.ICE	Dec 2011	101.63 S	-1.43	103.90	101.16	22:44
/BRNF2.ICE	Jan 2012	101.74 S	-1.64	101.80	101.80	20:29
/BRNG2.ICE	Feb 2012	101.86 S				
/BRNH2.ICE	Mar 2012	101.96 S				

When the screen populates, right mouse click on the grid for pull-down of options. It is usually necessary to put the contracts into date order. Follow the screen below to remove 'zero' lines as well.



To customize the columns for information you need, again right mouse on the window grid and select **Column Layout Choices > Configure Column Layout**. A view comes back with the fields originally in the view and a window that allows selection of other columns.



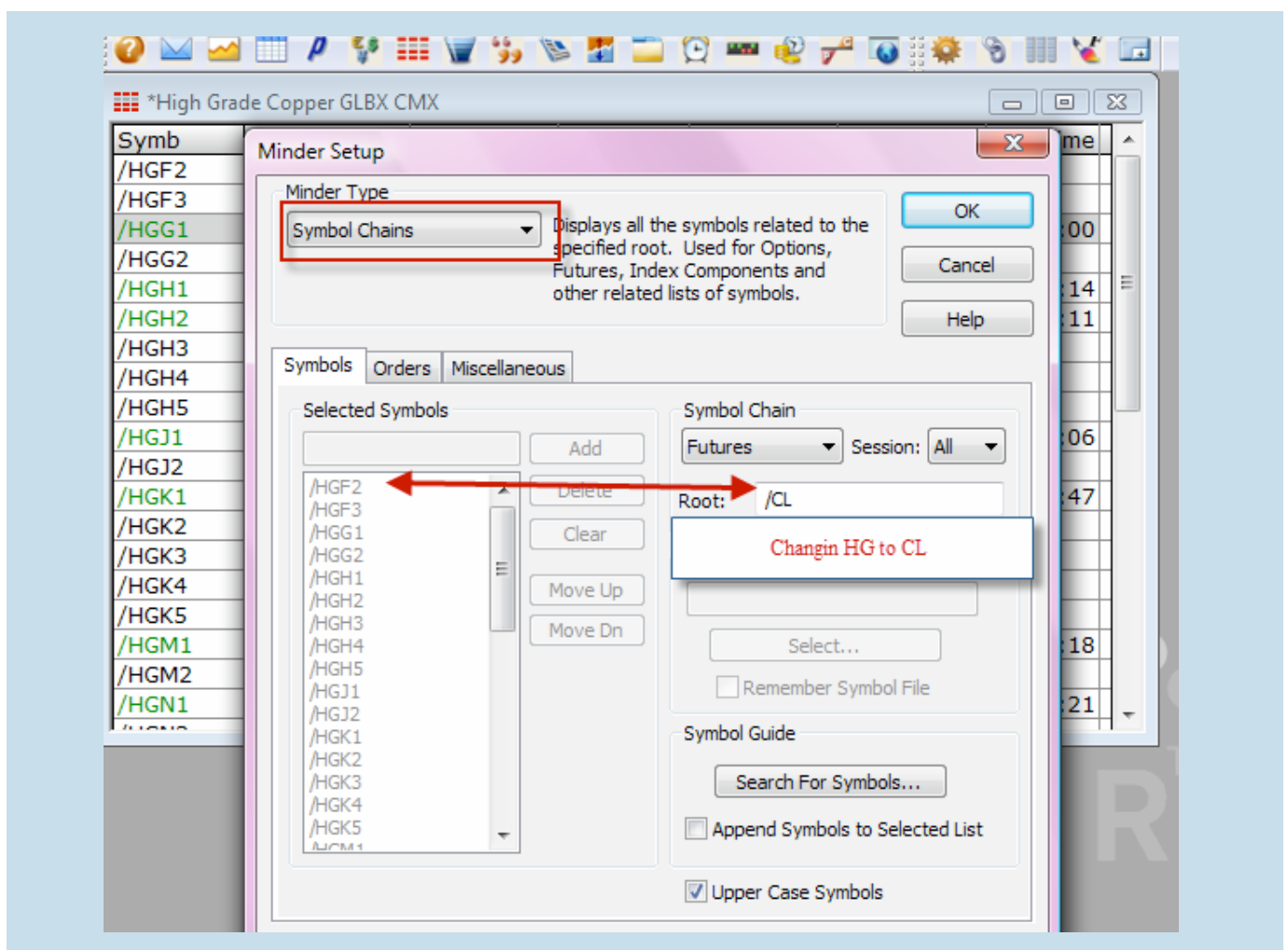
Highlight the field you wish to add. If more than one selection is on list, hold the **Ctrl** as you highlight. When column is selected, click **OK**. This adds the field (s) to the Column Configuration Screen. Once the fields are in the Configuration screen, use the Move buttons to arrange the screen (left = top field). If you need to fix alignment or column width, double click on the field name for a screen to allow these changes.

**Note:** Like Excel, there are many changes to columns that can be done directly on the screen. Move the cursor on the column name and right mouse for selections.

Once you have a column configuration completed, you may save it to use in other exchange windows to save time. Right mouse on the grid for the drop down and note the options. **Save** and **Save As** allow for the configuration to be uniquely named. When you create another MarketMinder window, right click on the grid and select **Column Configuration > Load**. Select your unique file name to bring in the configuration.

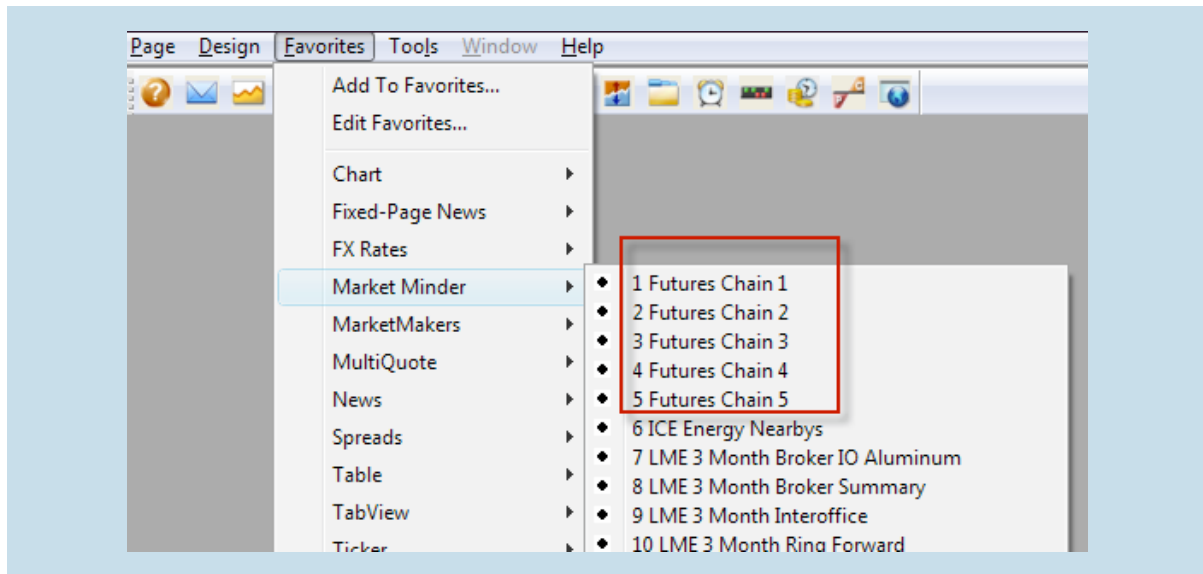
To easily **change** the underlying Exchange contract within a window, right mouse within the grid and select Quick Setup, following the setup above.

If the exchange symbol you need is not on the Quick Setup list, you may add or change it with the **Setup** selection on the right mouse drop down.



### Using Favorites to set up Exchange Data

POTN has created preset MarketMinder windows under the Favorites. To review the selections available – **Favorites > MarketMinder**. Review the available list. If you find a set-up you would like to affix to a desktop, select to use. Once the format is on your desktop, it can be configured using the tools above.

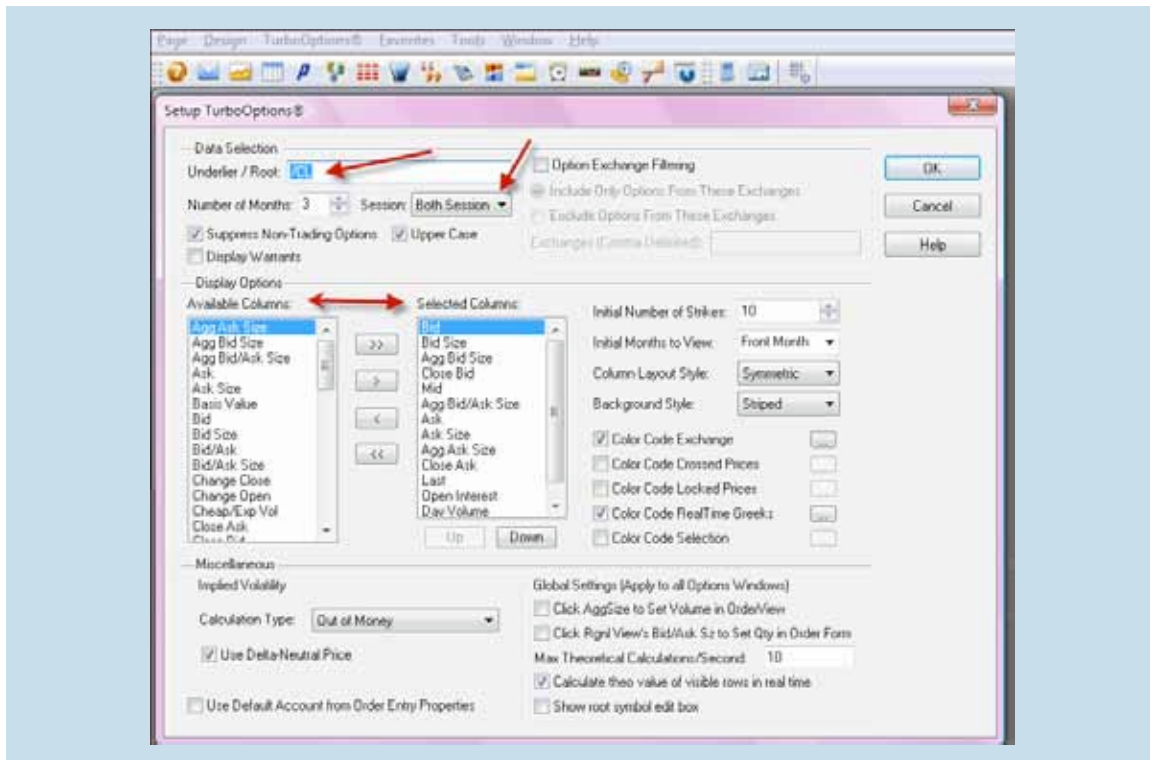


### Using TurboOptions

TurboOptions is an advanced quote screen to quickly display option data in an easy to read format.

To set up – **Design > Turbo Options** activates the setup screen:

Enter the root symbol- Change the Session = Both or Night (activate Globex electronic trading) -Adjust the field selection and the remaining features to suit your needs.



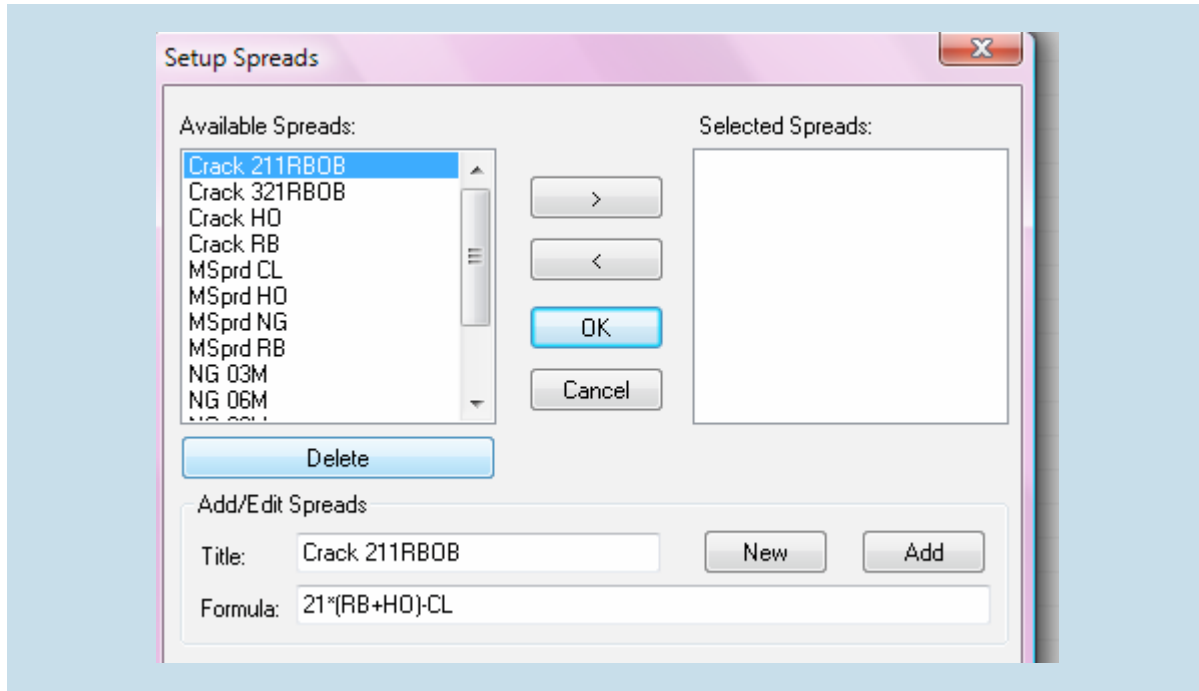
Example of the basic Turbo Options screen:

Calls						Puts					
Agg Bid/Ask Size	Mid	Close Bid	Agg Bid Size	Bid Size	Bid	Bid	Bid Size	Agg Bid Size	Close Bid	Mid	Agg Bid/Ask Size
0/0	101.12	0	0	3	101.11	1.07	50	0	0	1.09	0/0
0/0	3.20	0	0	15	3.10	1.26	16	0	0	1.28	0/0
0/0	2.89	0	0	25	2.80	1.47	26	0	0	1.49	0/0
0/0	2.61	0	0	17	2.55	1.70	45	0	0	1.73	0/0
0/0	2.34	0	0	37	2.29	1.95	53	0	0	1.98	0/0
0/0	2.09	0	0	40	2.07	2.23	30	0	0	2.26	0/0
0/0	1.88	0	0	32	1.85	101.5	101.5	0	0	2.56	0/0
0/0	1.68	0	0	44	1.65	102	2.51	37	0	2.87	0/0
0/0	1.50	0	0	44	1.47	102.5	2.82	27	0	3.19	0/0
0/0	1.34	0	0	41	1.31	103	3.12	25	0	3.56	0/0
0/0	1.19	0	0	39	1.16	103.5	3.45	15	0		0/0
0/0	0.00	0	0	0	.00	Apr '11					
0/0	102.12	0	0	2	102.30	05/01/11					
0/0	0.00	0	0	0	.00	May '11					
0/0	102.92	0	0	2	102.90	06/01/11					
0/0	0.00	0	0	0	.00	Jun '11					

### Create a Spreads Window

The Spreads window can easily be set up to display pre-built spreads, such as crack spreads.

To activate: **Design > Spreads**



Select the formula(s) and move them to the right box. To create your own formula, create a title, write out the formula and click the ADD button.

Month	RB	HO	CL
Apr 2011	Crack 211RBOB	25.1907	24.9016
May 2011	Crack 211RBOB	24.2254	23.8866
Jun 2011	Crack 211RBOB	23.5855	23.1004
Jul 2011	Crack 211RBOB	22.9684	22.2866
Aug 2011	Crack 211RBOB	22.4640	21.5610
Sep 2011	Crack 211RBOB	21.9940	20.8236
Oct 2011	Crack 211RBOB	19.5015	17.3616
Nov 2011	Crack 211RBOB	19.1407	16.7264
Dec 2011	Crack 211RBOB	18.9889	16.3898
Jan 2012	Crack 211RBOB	19.4003	16.7480
Feb 2012	Crack 211RBOB	19.8964	17.3190
Mar 2012	Crack 211RBOB	20.1369	17.7310
Apr 2012	Crack 211RBOB	22.2429	20.8590
May 2012	Crack 211RBOB	22.1639	20.9480
Jun 2012	Crack 211RBOB	22.0454	20.8750
Jul 2012	Crack 211RBOB	22.0749	20.8030
Aug 2012	Crack 211RBOB	22.0194	20.5620
Sep 2012	Crack 211RBOB	21.8504	20.1620



Move to the left on the top line of the spread and click on a contract symbol. The window will change to display the basic data driving the spreads.

Spreads	RB	HO	CL		
Contract	Date	Expire Date	Symbol	Last Price	Hist Close
Apr 2011		3/31/2011	/HOD1	3.0290	3.0449
May 2011		4/29/2011	/HOE1	3.0379	3.0559
Jun 2011		5/31/2011	/HOI1	3.0474	3.0672
Jul 2011		6/30/2011	/HOL1	3.0589	3.0801
Aug 2011		7/29/2011	/HOO1	3.0715	3.0935
Sep 2011		8/31/2011	/HOP1	3.0856	3.1088
Oct 2011		9/30/2011	/HOR1	3.0986	3.1227
Nov 2011		10/31/2011	/HOS1	3.1108	3.1357
Dec 2011		11/30/2011	/HOT1	3.1211	3.1470
Jan 2012		12/30/2011	/HOA2	3.1316	3.1582
Feb 2012		1/31/2012	/HOB2	3.1333	3.1597
Mar 2012		2/29/2012	/HOC2	3.1213	3.1487
Apr 2012		3/30/2012	/HOD2	3.0913	3.1197
May 2012		4/30/2012	/HOE2	3.0698	3.0992
Jun 2012		5/31/2012	/HOI2	3.0573	3.0877
Jul 2012		6/29/2012	/HOL2	3.0593	3.0897
Aug 2012		7/31/2012	/HOO2	3.0648	3.0952
Sep 2012		8/31/2012	/HOP2	3.0718	3.1022